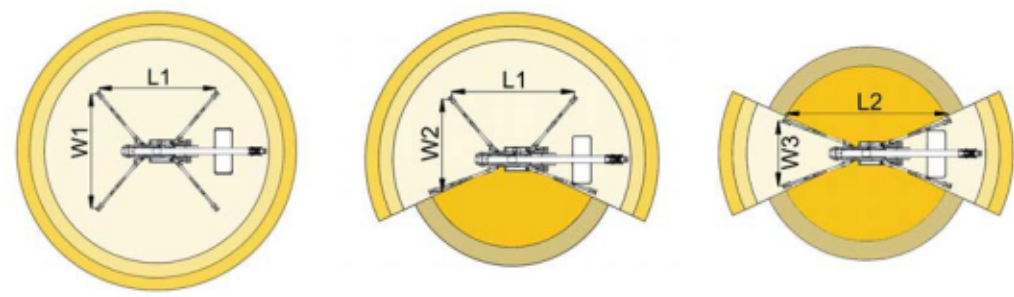
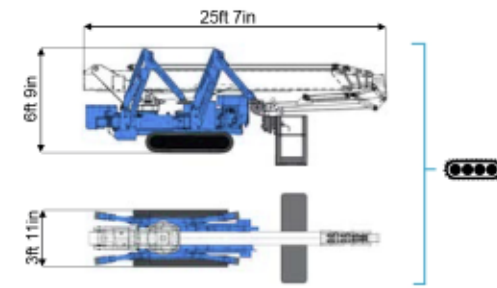
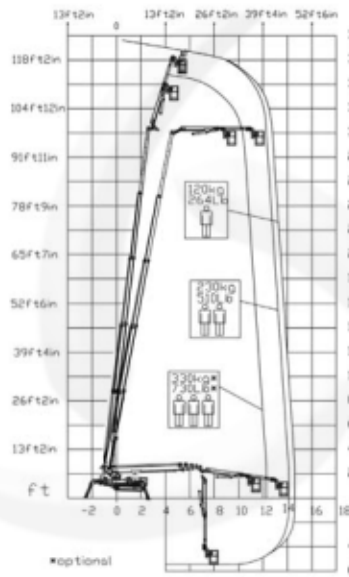


XTJ 121



121ft 5in ↑
 47ft 7in →
 730 lb*



44ft 3in	45ft 11in	47ft 7in	25ft 3in	31ft 2in	L1	L2	W1	W2	W3
730 lb*	510 lb	264 lb	730 lb*	264/510 lb	17ft 9in	23ft 6in	17ft 3in	13ft	8ft 9in

BI-ENERGY
Diesel+AC



XTJ 121		121ft 5in	47ft 7in	730 lb*	170°	660°	5ft 11in x 2ft 4in	90°+80°	8ft 10in-17ft 4in	23%	36%	1,24 mph	16534 lb	12363 lb	55,14 psf	111,53 psf
---------	--	-----------	----------	---------	------	------	--------------------	---------	-------------------	-----	-----	----------	----------	----------	-----------	------------